

Coupling bodies

HFC35 series nominal diameter 9.6 mm, polysulfone



Tapered pipe male thread

Thread size inch	non-valved	valved
3/8" NPT	HFC10635	HFCD10635
3/8" BSPT	HFC10635BSPT	HFCD10635BSPT
1/2" NPT	HFC10835	HFCD10835
1/2" BSPT	HFC10835BSPT	HFCD10835BSPT
3/4" NPT	HFC101235	HFCD101235
3/4" BSPT	HFC101235BSPT	HFCD101235BSPT
3/4" GHT	HFC101235GHT	HFCD101235GHT



Parallel pipe female thread

Thread size inch	non-valved	valved
3/4" GHT	HFC191235GHT	HFCD191235GHT
3/4" BSPP	HFC191235BSPP	HFCD191235BSPP



Shut-off coupling straight barb

Tube size inch	Tube size metric	non-valved	valved
3/8" ID	9.5 mm ID	HFC16635	HFCD16635
1/2" ID	12.7 mm ID	HFC16835	HFCD16835
5/8" ID	15.9 mm ID	HFC161035	HFCD161035
3/4" ID	19 mm ID	HFC161235	HFCD161235



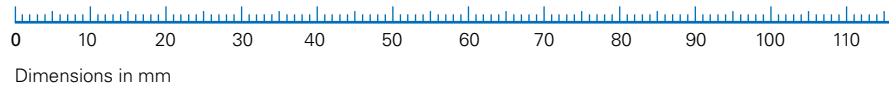
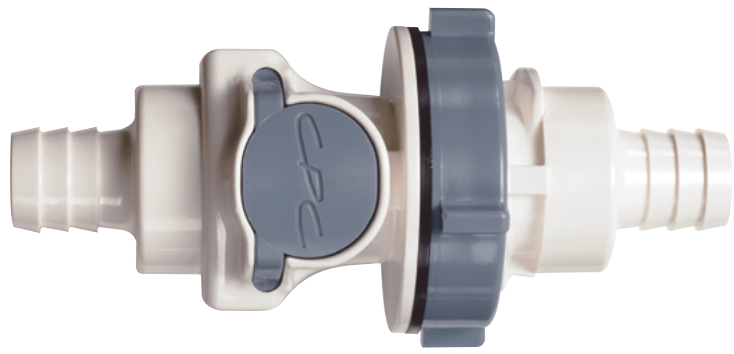
In-line straight barb

Tube size inch	Tube size metric	non-valved	valved
3/8" ID	9.5 mm ID	HFC17635	HFCD17635
1/2" ID	12.7 mm ID	HFC17835	HFCD17835
5/8" ID	15.9 mm ID	HFC171035	HFCD171035
3/4" ID	19 mm ID	HFC171235	HFCD171235

Plugs

HFC35 series

nominal diameter 9.6 mm,
polysulfone



Tapered pipe
male thread

Thread size inch	non-valved	valved
3/8" NPT	HFC24635	HFCD24635
3/8" BSPT	HFC24635BSPT	HFCD24635BSPT
1/2" NPT	HFC24835	HFCD24835
1/2" BSPT	HFC24835BSPT	HFCD24835BSPT
3/4" NPT	HFC241235	HFCD241235
3/4" BSPT	HFC241235BSPT	HFCD241235BSPT
3/4" GHT	HFC241235GHT	HFCD241235GHT



Parallel pipe
female thread

Thread size inch	non-valved	valved
3/4" GHT	HFC261235GHT	HFCD261235GHT
3/4" BSPP	HFC261235BSPP	HFCD261235BSPP



In-line
straight barb

Tube size inch	Tube size metric	non-valved	valved
3/8" ID	9.5 mm ID	HFC22635	HFCD22635
1/2" ID	12.7 mm ID	HFC22835	HFCD22835
5/8" ID	15.9 mm ID	HFC221035	HFCD221035
3/4" ID	19 mm ID	HFC221235	HFCD221235



Elbow
straight barb

Tube size inch	Tube size metric	non-valved	valved
3/8" ID	9.5 mm ID	HFC23635	HFCD23635
1/2" ID	12.7 mm ID	HFC23835	HFCD23835