

POREX® silencer made of porous plastic

New

POREX® silencer made of porous plastic

The POREX® silencers made of hydrophobic polyethylene have been developed to ensure an optimal balance between noise reduction and pressure reduction in pneumatic systems. In addition, the porous polyethylene structure of the silencers ensures low weight, excellent corrosion durability and the ability to filter particles and aerosols. The Porex silencers are equipped with an injection molded adapter and a variety of connection options that are easy to mount on pneumatic systems.

The available connectors can be delivered in a wide range of sizes, that fit most standard valves, such as NPT, BSP, M5 and "Push-In". Porex silencers offer numerous advantages over metal silencers. These include significantly lower weight and significantly improved corrosion resistance, durability, fast assembly and cost efficiency.



POREX® silencer made of porous plastic

Technical Data

Material:	Filter head: Porous, hydrophobic Polyethylene (PE), blue, yellow, grey, orange, white Lower part: Polyethylene (PE)
Thread size:	Standard silencer: M5, 1/8", 1/4", 3/8", 1/2", 3/4", 1" BSP or NPT Push-in silencer: 4, 6, 8, 10, 12 mm Adjustable silencer: M5, 1/8", 1/4", 3/8", 1/2" BSP or NPT
Pore size:	60 – 130 µm
Max. operating pressure:	10 bar
Differential pressure:	see table
Max. Temperature:	100 °C

Application

- Effectively reduce the noise level of pneumatic devices
- Fine regulation of air flow
- Filtering effectively particles and aerosols

Features and Benefits

- Silencer made of porous PE, hydrophobic
- Lower weight and improved corrosion resistance to metal silencers
- Integrated thread adapter for easy mounting on pneumatic devices
- Optimal balance between noise reduction and back pressure
- Wide range of sizes and connectivity options
- Fast assembly and cost efficiency

The "push-in" silencers replace rotary threads with their plug-in system, which is particularly useful for small sizes.

Adjustable silencers, also called restrictors, provide the user with additional value thanks to the possibility of fine-tuning the air escaping through the restrictor with the help of an hexagon socket key. The screw for regulating the air flow is easily accessible after installation of the restrictor.

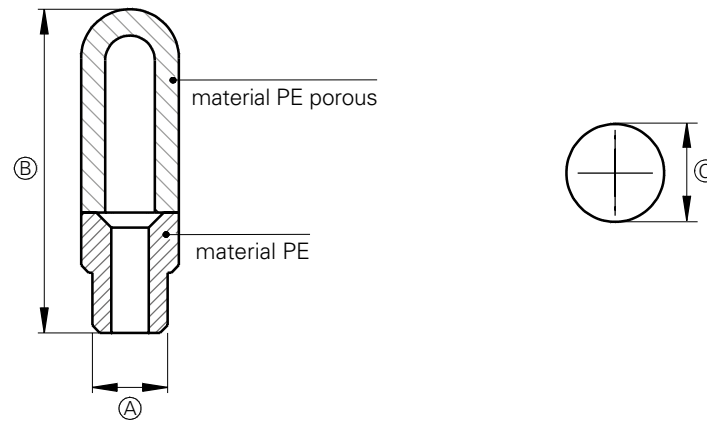


„Push-In“ silencer



Adjustable silencer

Dimensions



Dimensions

Type	A	B	C	Wrench wide
<i>Standard silencer</i>				
S01ST	M5	21.5 mm	Ø 6.5 mm	
S03ST	1/8" BSP o. NPT	34.0 mm	Ø 12.5 mm	
S04ST	1/4" BSP o. NPT	42.5 mm	Ø 15.5 mm	
S05ST	3/8" BSP o. NPT	67.5 mm	Ø 18.5 mm	
S06ST	1/2" BSP o. NPT	77.5 mm	Ø 23.3 mm	
S07ST	3/4" BSP o. NPT	131.5 mm	Ø 38.5 mm	
S08ST	1" BSP o. NPT	161.0 mm	Ø 49.0 mm	
S03WB	1/8" BSP	29.0 mm	Ø 13.5 mm	
S04WB	1/4" BSP	36.5 mm	Ø 17.3 mm	
S05WB	3/8" BSP	63.5 mm	Ø 27.0 mm	
S06WB	1/2" BSP	63.5 mm	Ø 27.0 mm	
S07HP	3/4" BSP	101.0 mm	Ø 49.0 mm	
<i>Push-in silencer</i>				
S01STPI	4 mm	32.0 mm	Ø 7.0 mm	
S03STPI	6 mm	45.0 mm	Ø 12.5 mm	
S03WBPI	8 mm	43.5 mm	Ø 13.5 mm	
S04STPI	10 mm	57.5 mm	Ø 15.5 mm	
S05STPI	12 mm	82.0 mm	Ø 18.5 mm	
<i>Adjustable silencer</i>				
R01ST	M5	16.0 mm		1.5 AF
R03ST	1/8" BSP o. NPT	20.5 mm	Ø 15.0 mm	2.5 AF
R04ST	1/4" BSP o. NPT	29.0 mm	Ø 18.0 mm	4.0 AF
R05ST	3/8" BSP o. NPT	38.0 mm	Ø 24.0 mm	6.0 AF
R06ST	1/2" BSP o. NPT	50.0 mm	Ø 30.0 mm	8.0 AF



Recommended flow rate / Differential pressure

Type	Recommended flow rate	Differential pressure
<i>Standard silencer</i>		
S01ST	15 l/min	50 mbar at 15 l/min
S03ST	50 l/min	50 mbar at 50 l/min
S04ST	70 l/min	50 mbar at 70 l/min
S05ST	60 l/min	25 mbar at 60 l/min
S06ST	70 l/min	25 mbar at 70 l/min
S07ST	90 l/min	10 mbar at 90 l/min
S08ST	70 l/min	25 mbar at 70 l/min
S03WB	50 l/min	50 mbar at 50 l/min
S04WB	70 l/min	25 mbar at 70 l/min
S05WB	60 l/min	25 mbar at 60 l/min
S06WB	70 l/min	25 mbar at 70 l/min
S07HP	90 l/min	10 mbar at 90 l/min
<i>Push-in silencer</i>		
S01STPI	15 l/min	50 mbar at 15 l/min
S03STPI	50 l/min	50 mbar at 50 l/min
S03WBPI	50 l/min	50 mbar at 50 l/min
S04STPI	70 l/min	50 mbar at 70 l/min
S05STPI	60 l/min	25 mbar at 60 l/min
<i>Adjustable silencer</i>		
R01ST	15 l/min	50 mbar at 15 l/min
R03ST	50 l/min	50 mbar at 50 l/min
R04ST	70 l/min	50 mbar at 70 l/min
R05ST	60 l/min	25 mbar at 60 l/min
R06ST	70 l/min	25 mbar at 70 l/min

Order examples

S	03	WBPI	8 mm	W
1	2	3	4	5

Order information

Pos.	Description
1	S = Standard silencer
	R = Adjustable silencer
2	01 = Size
	03 = Size
	04 = Size
	05 = Size
	06 = Size
	07 = Size
	08 = Size
	3
STPI = Standard with Push-in	
WB = Wide Body	
WBPI = Wide Body with Push-in	
HP = Hydrophilic (otherwise hydrophobic)	
4	1/8" BSP o. NPT
	1/4" BSP o. NPT
	3/8" BSP o. NPT
	1/2" BSP o. NPT
	3/4" BSP o. NPT
	1" BSP o. NPT
	4 mm Push-in
	6 mm Push-in
	8 mm Push-in
	10 mm Push-in
	12 mm Push-in
	M5 Metric ISO thread
5	B = blue
	G = grey
	O = orange
	W = white
	Y = yellow