

Cartridge Filter Housings

Center post for DOE-Cartridge filter elements

A pluggable center post with 222 adapter and counterholder is provided for installing filter elements with double open end (DOE) in Wolftechnik cartridge filter housings. Our 2nd generation center post sets standards in terms of flexibility, cleanability and safety. The polished surface and the fact that it can be dismantled into all individual parts significantly improve cleanability and thus extend the life of your filter system.

By integrating an innovative spring compensation, the risk of filter elements compressing due to temperature-related expansion is minimized. The flexible installation option – with or without spring compensation – allows you to adapt to the specific requirements of your application. The open area of the lasered tubes has been improved compared to the previous center post made of perforated sheet metal, which leads to increased throughput. These groundbreaking improvements set new standards in filtration technology and represent quality, innovation and versatility.



Center post for DOE-Cartridge filter elements

New

Technical data

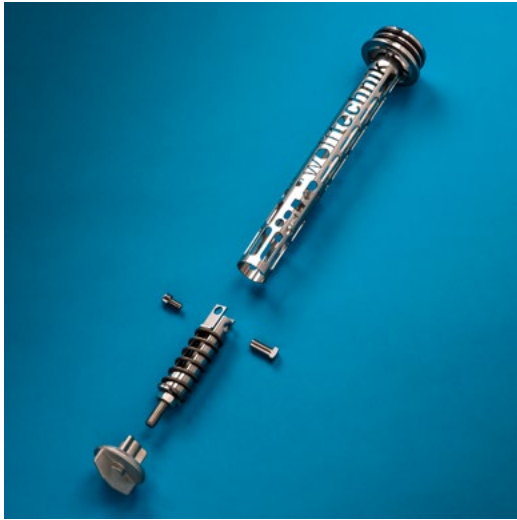
Material:	Tube: stainless steel 1.4401 (AISI316) / 1.4404 (316L)
	Pressure spring: stainless steel 1.4571 (AISI316 Ti)
	Internal parts: stainless steel 1.4401 (AISI316)
	Screw / Nut: A4-70
Dimensions:	see installation dimensions
Gaskets:	Viton (Viton+Teflon, EPDM, Silicone, Buna)
For filter elements:	DOE (4 $\frac{7}{8}$ " – 40")
Differential pressure:	} see data sheet of the filter element used
Pressure:	
Temperature:	
Flow rate:	The maximum flow rate correlates to the nominal diameter of the housing connection and the characteristic curve of the flow rate of the chosen filter element.

Applications

- For the installation of filter elements with double open end (DOE)
- Can be used in cartridge filter housings for almost all industrial applications

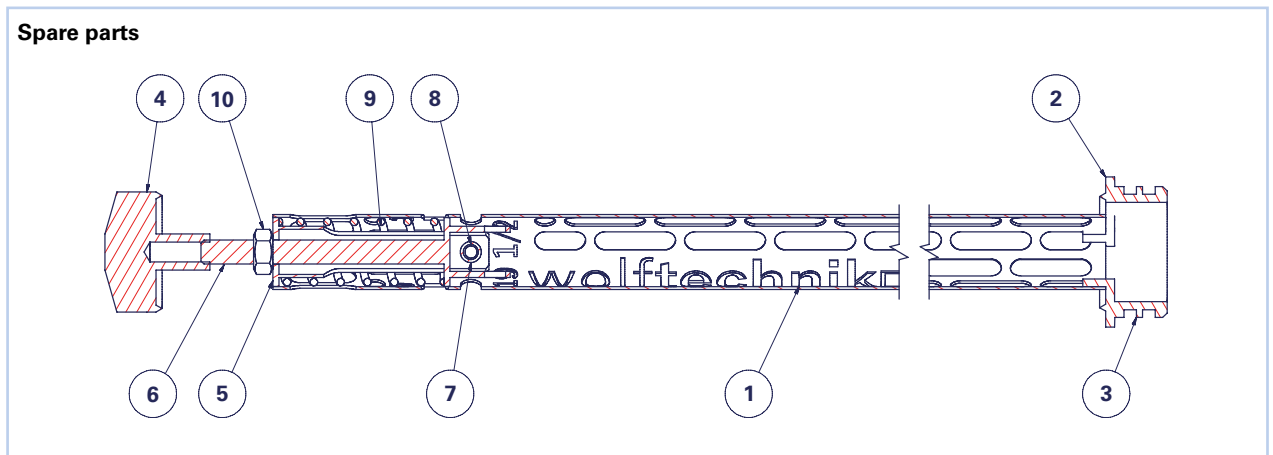
Features and Benefits

- Each suitable for two lengths:
[4 $\frac{7}{8}$ " + 5"] [9 $\frac{3}{4}$ " + 10"] [19 $\frac{1}{2}$ " + 20"] [29 $\frac{1}{4}$ " + 30"] [39" + 40"]
- Completely made of stainless steel
- With 222-adapter
- Standard sealing material Viton, others on request
- The open structures on the tube optimize the flow rate
- Can be used dynamically or rigidly thanks to the pressure spring
- The pressure spring compensates for the temperature-related linear expansion of the filter cartridge
- Can be dismantled into all individual parts and is therefore easy to clean



From now on, all of our new guide rods bear the Wolftechnik logo, for the highest standards and proven technology.

One center post is suitable for two inch lengths [4 $\frac{7}{8}$ " + 5"] [9 $\frac{3}{4}$ " + 10"] [19 $\frac{1}{2}$ " + 20"] [29 $\frac{1}{4}$ " + 30"] [39" + 40"] can be used. This flexibility enables the attachment points provided in the center post for the "clever" end piece.

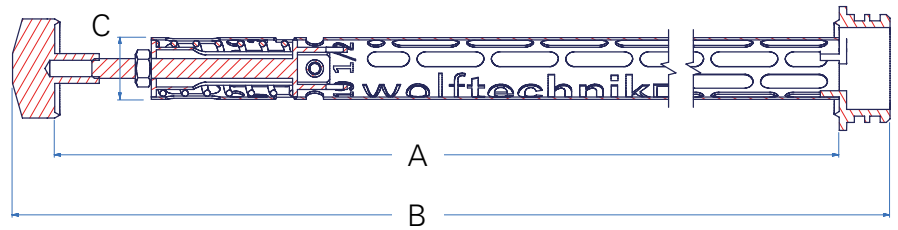


Spare parts

Pos.	Description	Material	Order designation	Order No.
1	Tube	AISI 316	WTGD-FST-05-TG	008983
			WTGD-FST-10-TG	008984
			WTGD-FST-20-TG	008985
			WTGD-FST-30-TG	008986
			WTGD-FST-40-TG	008987
2	222-adaptor	1.4404	01WTKF-FST-Adapter-222-TG	006945
3	O-ring for center post	Viton	70003-B-ORVIT-222	007175
		Viton-FEP-encapsulated	70003-FEP-Viton-222	004405
		EPDM	70003-C-OREPDM-222	006610
		Buna	70003-D-Buna-222	004061
		Silicone	70003-A-Silikon-222	007176
4	Counterholder	1.4404	01WTKF-FST-Gegenhalter-222-TG	006944
5	Insert	AISI 316	WTGD-FST-Einleger HLS-222-TG	008988
6	Insert counterholder	AISI 316	WTGD-FST-Einleger GGH-222-TG	008989
7	Nut	AISI 316	WTGD-FST-Mutter M5-222-TG	008990
8	Screw	Stainless steel A4	WTGD-FST-Schraube M5-222-TG	008991
9	Pressure spring	1.4571	WTBF40-Feder-TG	007747
10	Nut	Stainless steel A4	WTGD-FST-Mutter M8-222-TG	006946



Dimensions



Dimensions

Type	A	B	C	Filter Cartridge DOE
WTGD-FST-05-222-TG center post	112 - 130	148 - 166	25 Ø	4 7/8" - 5" (124 - 127 mm)
WTGD-FST-10-222-TG center post	233 - 256	269 - 292	25 Ø	9 3/4" - 10" (248 - 254 mm)
WTGD-FST-20-222-TG center post	481 - 510	517 - 546	25 Ø	19 1/2" - 20" (496 - 508 mm)
WTGD-FST-30-222-TG center post	729 - 765	765 - 801	25 Ø	29 1/4" - 30" (744 - 762 mm)
WTGD-FST-40-222-TG center post	975 - 1020	1010 - 1056	25 Ø	39" - 40" (992 - 1016 mm)

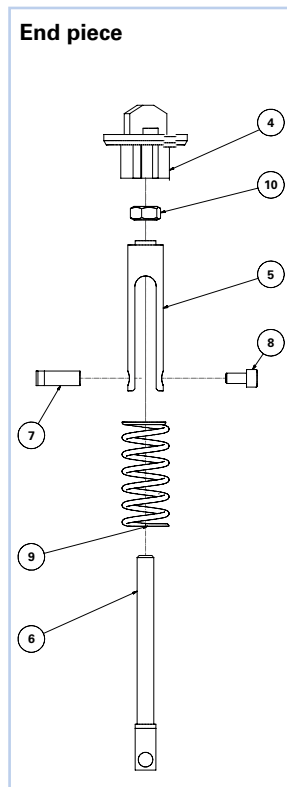
All dimensions are approximate dimensions

The center post, made of highly polished stainless steel 1.4401, has an individual hole design with Wolftechnik branding. Despite this very open structure, the center post retains its rigidity and safety even under high pressure and temperature-related linear expansion of the filter elements.



Order information for center post

Pos.	Designation	For Filter Cartridge DOE	Order No.
1	WTGD-FST-05-222-TG Führungsstange	4 7/8" - 5" (124 - 127 mm)	S009566
2	WTGD-FST-10-222-TG Führungsstange	9 3/4" - 10" (248 - 254 mm)	S009567
3	WTGD-FST-20-222-TG Führungsstange	19 1/2" - 20" (496 - 508 mm)	S009568
4	WTGD-FST-30-222-TG Führungsstange	29 1/4" - 30" (744 - 762 mm)	S009569
5	WTGD-FST-40-222-TG Führungsstange	39" - 40" (992 - 1016 mm)	S009570



„Clever“ End piece

The pressure spring (9) pushed over the insert (5) and the insert counterholder (6) is inserted through the insert (5) from below. The end piece is screwed together using the nut (10) and the pressure spring (9) is pretensioned.

The end piece on the insert (5) is fixed in the appropriate position in the laser-cut tube (1) using the nut (7) and screw (8).

If the center post is to be installed rigidly, the pressure spring (9) and the insert (5) are omitted. The end piece is then fixed to the insert counterholder (6) using a nut (7) and screw (8) in the appropriate position in the laser-cut tube (1).

This means the center post can be installed in the housing. A filter cartridge is fixed on the center post using the counterholder (4).

