

Cartridge Filter Housings

WTGDS Stainless Steel Cartridge Filter Housing with casted, hinged cover and socket

WTGDS Stainless Steel Cartridge Filter Housing with casted socket and hinged cover convince through their compact, space-saving design. And another advantage is that because of the special design of the socket-bottom together with the horizontal outlet the housings can be drained completely. WTGDS cartridge filter housings are manufactured in different assembly sizes. The assembly sizes differ from one another in the amount and length of filter cartridges that can be built inside. So there can be built 3, 5 or 8 filter cartridges in the length from 10" to 40" inside of a housing. An important feature of the WTGDS cartridge filter housings is the fact, that the position, type and size of the inlet and outlet connections are variable and are only manufactured at time of and according to customer specification.

WTGDS Cartridge filter housings can be supplied with filter cartridges with double open end (DOE*), with filter cartridges with adapter and flat endcap (Code 0) or with adapter and endcap with fin (Code 5). Options for all sizes are a pressure-gauge-vent-unit and a magnet insert for preseparation of ferrite particles.



WTGDS Stainless Steel Cartridge Filter Housing

Technical data

Material:	Housing: stainless steel 1.4404 / 1.4571 Installations: stainless steel 1.4404 / 1.4571
In- / Outlet:	O-Ring: Viton (optional Viton-FEP-encapsulated, EPDM, Silicone) position, type and size according to customer specification
Vent:	2 x 1/4" internal thread
Drain:	2 x 1/2" internal thread
Filter Cartridges:	Amount and length see table
Difference pressure:	see datasheet of the filter cartridges
Max. operating pressure:	10bar
Max. operating temperature:	95°C
Flow rate:	The maximum flow rate correlates to the nominal diameter of the housing connection and the characteristic curve of the flow rate of the chosen filter element.

New

Applications

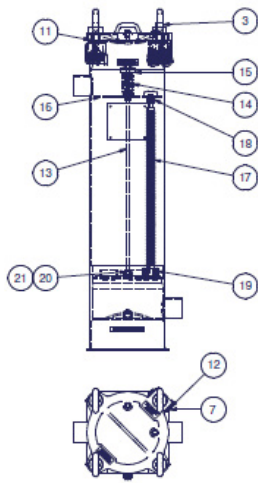
- Fine filters for cooling circuits
- Particle filters for cleaning baths
- Pre-filters for reverse osmosis plant
- Protection filters for pumps
- Pre-filter for drinking water recycling
- Post-filters for activated carbon filters and ion exchangers
- Suspended particle filters for well-water
- Process filters for varnishes, paints and adhesives
- End filters for bottling of liquids

Features and Benefits

- Stainless Steel Cartridge Filter Housing with casted, hinged cover and socket
- Horizontal outlet for complete draining
- Space-saving, low design because of compact socket
- Three sizes for 3, 5 and 8 filter cartridges type Code 0, Code 5 or DOE*, in the length of 10", 20", 30" or 40"
- Position, type and size of the inlet and outlet connections according to customer specification
- Center post for DOE* filter elements made of stainless steel 1.4401 / 1.4404 with 222 adapter and counterholder with cutting edge for secure sealing
- Pressure-gauge-vent-unit and magnet-insert as optional accessories.

* One additional center post is required for each DOE cartridge filter element!

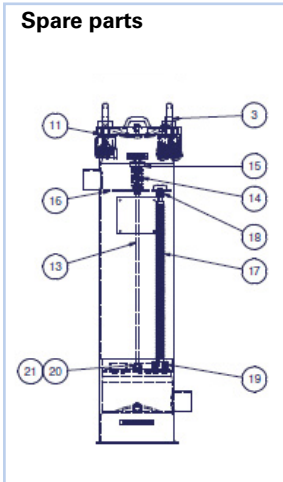
Spare parts



Spare parts

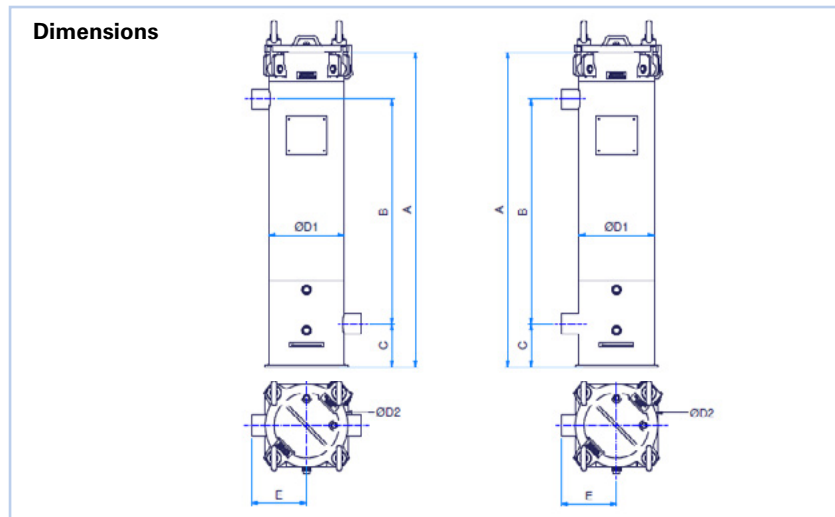
Pos.	Description	Material	Order designation	Order No.	
1	03WTGDS-cover	Stainless steel 1.4404	d168x3-Deckel-TG	007473	
	05WTGDS-cover		d219x3-Deckel-TG	007427	
	08WTGDS-cover		d273x3-Deckel-TG	007475	
2	03WTGDS-flange	Stainless steel 1.4404	d168x3-Flansch-TG	007474	
	05WTGDS-flange		d219x3-Flansch-TG	007428	
	08WTGDS-flange		d273x3-Flansch-TG	007476	
3	03WTGDS-swinging bolt	C15, C-steel, zinc plated	d168x3-Augenschraube-C	007730	
	05WTGDS-swinging bolt		d219x3-Augenschraube-C	007732	
	08WTGDS-swinging bolt		d219x3-Augenschraube-C	007732	
4	03WTGDS-ring nut	C15, C-steel, zinc plated	d168x3-Ringmutter-C	007731	
	05WTGDS-ring nut		d219x3-Ringmutter-C	007733	
	08WTGDS-ring nut		d219x3-Ringmutter-C	007733	
5	03WTGDS-washer	Stainless steel V2A	d168x3-U-Scheibe-C	007721	
	05WTGDS-washer		d219x3-U-Scheibe-C	007432	
	08WTGDS-washer		d219x3-U-Scheibe-C	007432	
6	03WTGDS-bolt, short	Stainless steel 1.4404	d168x3-Bolzen-kurz-TG	007726	
	05WTGDS-bolt, short		d219x3-Bolzen-kurz-TG	007433	
	08WTGDS-bolt, short		d219x3-Bolzen-kurz-TG	007433	
7	03WTGDS-bolt, long	Stainless steel 1.4404	d168x3-Bolzen-lang-TG	007727	
	05WTGDS-bolt, long		d219x3-Bolzen-lang-TG	007434	
	08WTGDS-bolt, long		d219x3-Bolzen-lang-TG	007434	
8	03WTGDS-retaining ring	Stainless steel V2A	d168x3-Sicherungsring-LG	007720	
	05WTGDS-retaining ring		d219x3-Sicherungsring-LG	007429	
	08WTGDS-retaining ring		d219x3-Sicherungsring-LG	007429	
9	Hex.- plug	1.4571	3WT-ESTOP-1/4-T	007151	
10	Gasket	PTFE	3WT-DIPTFE-ENTL	000364	
11	O-Ring for housing	Viton	03WTGD-ORVIT-GEH	007748	
			05WTGD = WTBF40-ORVIT-GEH	001082	
			08WTGD-ORVIT-GEH	007734	
			Viton-FEP-encapsulated	03WTGD-ORFEP-GEH	002041
			05WTGD = WTBF40-ORVIT-GEH	002252	
			08WTGD-ORVIT-GEH	999996	
			EPDM	03WTGD-OREPDM-GEH	008367
			05WTGD=WTBF40-OREPDM-GE	005672	
			08WTGD-OREPDM-GEH	007848	
			Silicone	03WTGD-ORSIL-GEH	999996
			05WTGD = WTBF40-ORSIL-GEH	003856	
08WTGD-ORSIL-GEH	999996				
12	03WTGDS-washer, hinge	Stainless steel V2A	d168x3-U-Scheibe-C	007721	
	05WTGDS-washer, hinge		d219x3-U-Scheibe-C	007478	
	08WTGDS-washer, hinge		d219x3-U-Scheibe-C	007478	
13	Rod	1.4404	WTGD-Zugstange-10-T	007750	
			WTGD-Zugstange-20-T	007751	
			WTGD-Zugstange-30-T	007752	
			WTGD-Zugstange-40-T	007753	
14	Spring for press-on-plate	1.4571	WTGD-Feder-T	008447	
15	Nut for press-on-plate	1.4404	WTGD-Knebel-T	007755	
16	Press-on-plate	1.4404	03WTGD-Andrückplatte-T	007756	
			05WTGD-Andrückplatte-T	007757	
			08WTGD-Andrückplatte-T	007758	

Spare parts



Pos.	Description	Material	Order designation	Order No.	
17	Center post*	Stainless steel 1.4401 / 1.4404	WTGD-FST-10-TG	S009567	
			WTGD-FST-20-TG	S009568	
			WTGD-FST-30-TG	S009569	
			WTGD-FST-40-TG	S009570	
18	Compression nut, center post	1.4404	01WTKF-FST-Gegenhalter-TG	006944	
19	O-ring for center post	Viton	70003-B-ORVIT-222	007175	
			Viton-FEP	70003-FEP-ORVIT-222	004405
			EPDM	70003-C-OREPDM-222	006610
			Silicone	70003-A-ORVIT-222	007176
20	Hex.-plug, 1/2"	1.4571	3WT-ASTOP-1/2-T	007154	
21	Gasket for plug	PTFE	3WT-DIPTFE-ABL	000363	

* One additional center post is required for each DOE cartridge filter element!



Dimensions

Typ	Cartridges	Inlet/Outlet	A	B	C	ØD1	ØD2	E
03WTGDS10	3 x 10" Ø72	1 1/2"	585	355	120	168	185	150
03WTGDS20	3 x 20" Ø72		845	615	120	168	185	150
03WTGDS30	3 x 30" Ø72		1105	875	120	168	185	150
03WTGDS40	3 x 40" Ø72		1365	1135	120	168	185	150
05WTGDS20	5 x 20" Ø72	2"	915	655	125	219	240	160
05WTGDS30	5 x 30" Ø72		1175	915	125	219	240	160
05WTGDS40	5 x 40" Ø72		1435	1175	125	219	240	160
08WTGDS20	8 x 20" Ø72	2 1/2"	905	630	135	273	290	170
08WTGDS30	8 x 30" Ø72		1165	890	135	273	290	170
08WTGDS40	8 x 40" Ø72		1425	1150	135	273	290	170

Order example

05	WTGDS	30	-	F	50	-	SU	-	222	-	T	V	-
1	2	3		4	5		6		7		8	9	10

Order information

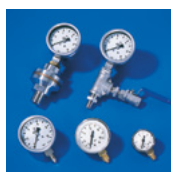
Pos.	Description	
1	03	3 filter cartridges
	05	5 filter cartridges
	08	8 filter cartridges
2	WTGDS	Wolftechnik cartridge filter housing with casted hinged cover and socket made from stainless steel
3	10	Filter cartridge length 9¾" oder 10" (248 mm or 254 mm)
	20	Filter cartridge length 19½" oder 20" (496 mm or 508 mm)
	30	Filter cartridge length 30" (762 mm)
	40	Filter cartridge length 40" (1016 mm)
4	F	Flange DIN2633
	R	BSP-pipe-thread, female
	M	screwed pipe connection DIN11851
	C	Camloc-coupling, male
	TC	TriClamp
5	1½	1½" BSP-thread
	2	2" BSP-thread
	40	DN40
	50	DN50
	65	DN65
6	SS	Inlet connection position on side, outlet on side diagonally across
	SD	Inlet connection position on side, outlet on side below it (on one side)
7	222	Cartridge filter elements Code 0 or Code 5
8	L	Housing material stainless steel 1.4404/1.4301
	T	Housing material stainless steel 1.4404/1.4571
9	V	O-Ring = Viton
	B	O-Ring = Buna
	E	O-Ring = EPDM
	S	O-Ring = Silicone
	F	Viton-FEP-encapsulated
10	--	Options

Accessories & Adapters



Accessories

Vents necessary for operation to release the pressure when changing filters, instruments suitable for rest-drainage, pressure controls and gauges when using the filter housings are a typical equipment for pressure vessels, and can be custom made and delivered for specific use.



Adapters

Adapter components are often necessary when installing Filter elements into the filter housings. We therefore offer a multitude of adaptation possibilities, e.g. adapters for range adjustments, adapters for the connection of additional filter elements or adapters as a centring assistance to be used in the installation of the filter elements.